



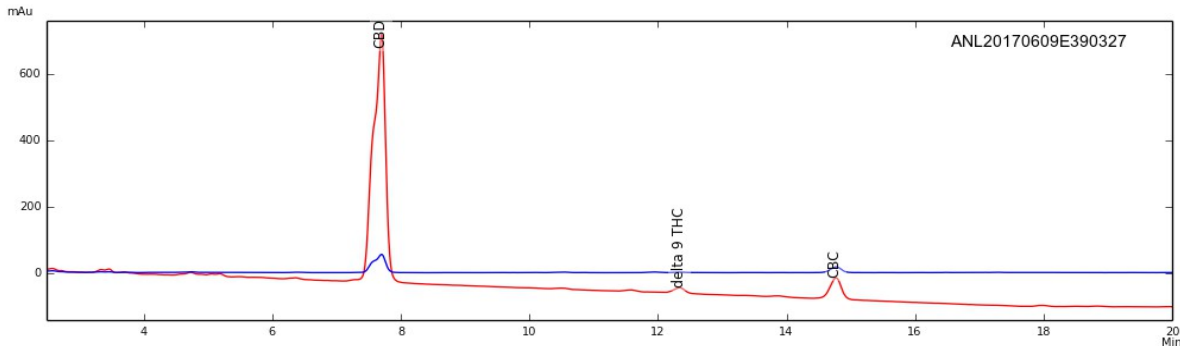
Certificate of Analysis

Sample: Hemp CBD Oil 6x Potency
Date Tested: 6/11/2017
Test Result UID: ANL20170609E390327 <http://anl360.co/m/707085>
WSLCB Tracking:

Photographs



HPLC Chromatogram



Serving Size: 10mL = 9.24 g

Cannabinoid Potency

< 0.01 mg delta-9 THC acid	< 0.01 mg CBD-Acid
11.75 mg delta-9 THC†	544.18 mg CBD
< 0.01 mg CBN	544.18 mg CBD-Total
< 0.01 mg CBG	19.41 mg CBC
11.75 mg Total THC (THC-A x (0.877) + THC)*	
575.34 mg Total Detected Cannabinoids (Total THC + Total CBD + CBN + CBG + CBC)	

* Total THC & CBD = content adjusted to account for the change in mass due to decarboxylation

† WSLCB Requirements limit each serving of an edible to 10mg delta-9 THC



Certificate of Analysis

Sample: Hemp CBD Oil 6x Potency
Date Tested: 6/11/2017
Test Result UID: ANL20170609E390327 <http://anl360.co/m/707085>
WSLCB Tracking:

Foreign matter inspection: 0 % PASS

Microbial screen:

Total aerobic plate count	<25 CFUs/gram	PASS
Total yeast and mold count	<25 CFUs/gram	PASS
Bile-tolerant gram negative bacteria count	<25 CFUs/gram	PASS
Coliforms	<25 CFUs/gram	PASS
E. coli	ND	PASS
Salmonella spp.	ND	PASS

*Limits

ND= not detected

Microbial

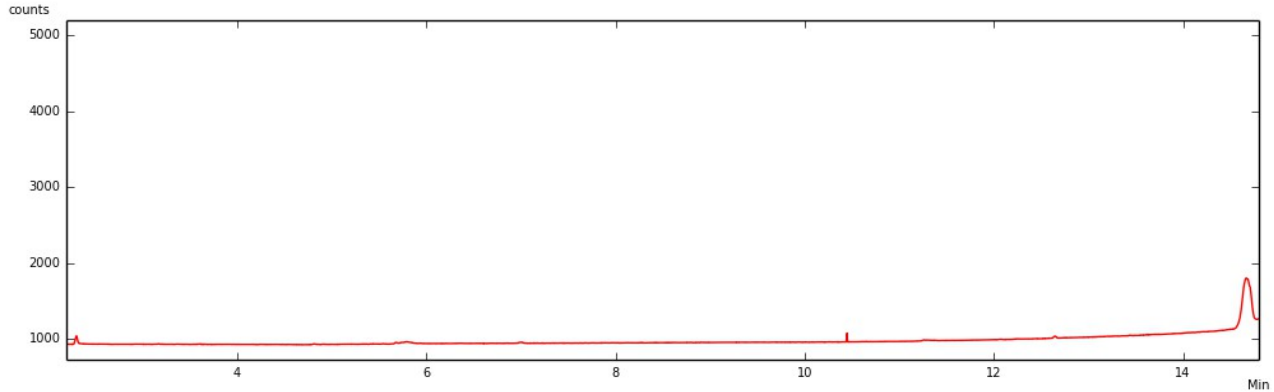
Not to exceed 100,000 Total aerobic plate count, 10,000 Total yeast and mold count, 1,000 bile-tolerant gram negative bacteria, 1,000 coliforms, and *E coli* and *Salmonella* not detected in one gram

Approved by: Dr. Paul Matthews



Certificate of Analysis – Residual Solvent Analysis

Sample: Hemp CBD Oil 6x Potency
 Date Tested: 6/11/2017
 Test Result UID: ANL20170609E390327 <http://anl360.co/m/707085>
 WSLCB Tracking:
 GC Chromatogram



- | | |
|---------------------|------------------------|
| < 2 ppm Propane | < 2 ppm Acetonitrile |
| < 2 ppm Isobutane | < 2 ppm Hexane |
| < 2 ppm Butane | < 2 ppm Chloroform |
| < 2 ppm Methanol | < 2 ppm Benzene |
| < 2 ppm Pentane | < 2 ppm Heptane |
| < 2 ppm Ethanol | < 2 ppm Tolulene |
| < 2 ppm Acetone | < 2 ppm Total Xylenes* |
| < 2 ppm Isopropanol | |

*Total Xylenes equal the sum of M,P-xylene, O-xylene & ethyl benzene

< 2 TOTAL ppm

Total Residual Solvents not to exceed 500ppm

No Hexane or Naphtha may be used in production of concentrates



Certificate of Analysis

Sample: Hemp CBD Oil 6x Potency

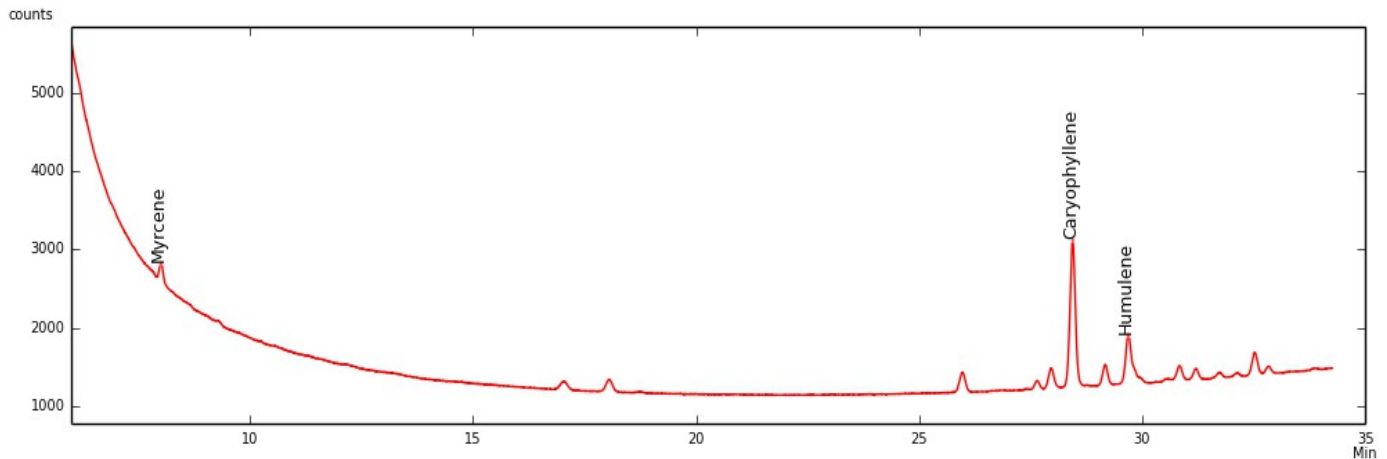
Date Tested: 6/11/2017

Test Result UID: ANL20170609E390327

<http://anl360.co/m/707085>

WSLCB Tracking:

GC-FID Chromatogram



	mg/g	%
α-Pinene	0.000	0.000
β-Pinene	0.000	0.000
Myrcene	0.000	0.000
Limonene	0.000	0.000
Ocimene*	0.000	0.000
Terpinolene	0.000	0.000
Linalool	0.000	0.000
Caryophyllene	1.149	0.115
Humulene	0.669	0.067
Total detected	1.819	0.182

*compound concentration based on beta Pinene
Detection limit of 0.05 mg/g

Approved by: Dr. Lara M Taubner